



## BioAxs 9700

### PHYSICAL ACCESS SOLUTION



### Key Benefits

#### Superior Security

*Traditional access control solutions provide only a means to do away with keys. They do nothing to improve upon the lack of security inherent with keys.*

*Proximity and magnetic swipe cards can be given to others for use or simply lost.*

*PINs and coded entry numbers are easily distributed to the wrong people.*

*Fingerprint recognition offer much more than conventional access control alternatives because a person's fingerprint cannot be lost or given to someone else. The authorized user must be physically present for access to be granted.*

#### Superior Convenience

*Eliminates the need for keys, cards or PINs and their cost to deploy and maintain.*

#### Cost Effective

*Reduces costs and headaches associated with card, token or PIN issuance & maintenance.*

### PRODUCT OVERVIEW

The BioAxs 9700 fingerprint recognition access control system provides the ultimate in convenience and performance for protecting any access points—from a single facility to an entire campus or office complex. The system employs a powerful search algorithm based on BIO-key's Vector Segment Technology™ (VST), eliminating the need for magnetic swipe, proximity cards (and the added recurring costs these represent), or pin numbers. Users simply place their finger on the reader to be identified and gain access.

To meet multi-factor authentication requirements, the BioAxs 9700 can also be integrated with pin pad, magnetic swipe, proximity card, or smart card technology to create a "verification" system allowing the system to match against only that user's fingerprint.

### FEATURES

#### Stand Alone Capability:

The system comes standard with a proprietary door controller board and can function as a "stand alone" device to open magnetic locks or strike plates, handle "request-to-exit" buttons, and accept fire alarm shunts.

#### Integrates With Existing Card Systems and Access Controllers:

Alternatively, the 9700 can act as a traditional reader on an existing access control system, passing the card reader output to the access controller via Wiegand protocol. The system is configurable to augment an existing card reader deployment and accepts both RS232 (magnetic swipe cards) and Wiegand protocol (proximity cards). If you have a preferred sensor or access card that we do not currently support, we will make every effort to incorporate it.

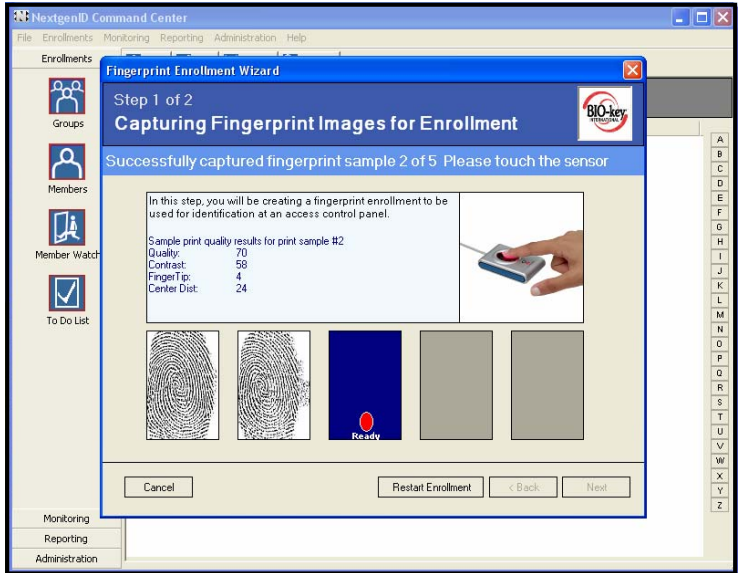
#### Flexible & Scalable System Architecture:

The system is designed to be extremely flexible and scale to any facility or campus. This feature rich, easy to use software operates in One-to-One and One-to-Many fingerprint modes. To accommodate large scale implementations (for example 50,000+ fingerprint templates), the BioAxs 9700 provides powerful command center access control software that employs TCP/IP communication; integrates Windows Organizational Security; and is configurable with single or multi-point enrollment and monitoring stations.

3349 Highway 138,  
Building D, Suite A  
Wall, NJ 07719, USA  
866.846.2594  
information@bio-key.com  
[www.bio-key.com](http://www.bio-key.com)

## SYSTEM FEATURES

- Centralized User Enrollment
- Real Time Alarms
- Duress Code Entry Alarms
- Monitors User Watch Lists
- Event Viewing & Logging Reports
- Remote Door Lockdown/Door Open
- Network Communications
- Single or multi-point enrollment & monitoring stations
- Optional Tailgating Monitoring
- Easily adapted to a variety of authentication and enrollment requirements
- Flexible System Architecture



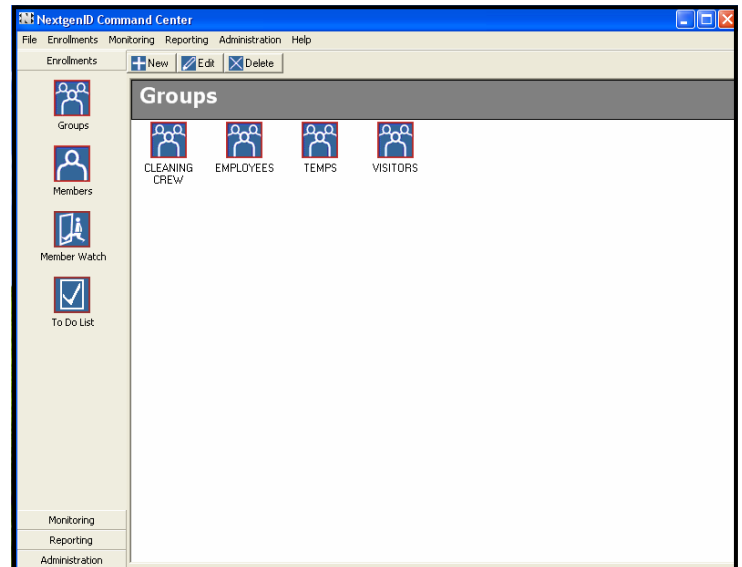
*Simple, Intuitive Enrollment Process*

## TECHNICAL SPECIFICATIONS

**Door Commander Module:** This industrial single board computer resides in an easy to install, small form factor, rack or wall mount chassis. It includes a watchdog timer and runs up to eight BioAxs 9700s. This unit is the “brain” of the Access Panel where biometric templates and access privileges are stored and matching is done. No user demographic data is stored here.

### Command Center Software:

Runs on any P3 866 MHz or higher processor with a 40 GB hard drive and 256 MB RAM running Windows 2000 Professional or XP Professional with an open USB port. Enterprise class solutions require a dedicated Command Center Server running Microsoft SQL server.



*Easy to Navigate, Administrator Console*

## SYSTEM REQUIREMENTS

The BioAxs 9700 access panel requires 24 volts DC. Amperage requirements vary with specific hardware configurations.

An access control power supply with battery backup is recommended for the access panel.

Door Commander Module requires 120 volts AC and an *uninterruptible power supply* is recommended.



*Optional Tailgating Monitor*